



LED Batten for Outdoor Use



Features

- ➔ Single ended power for ultimate safety
- ➔ Surge protector system
- ➔ Low electromagnetic interference
- ➔ 45,000 hour lifetime

Applications

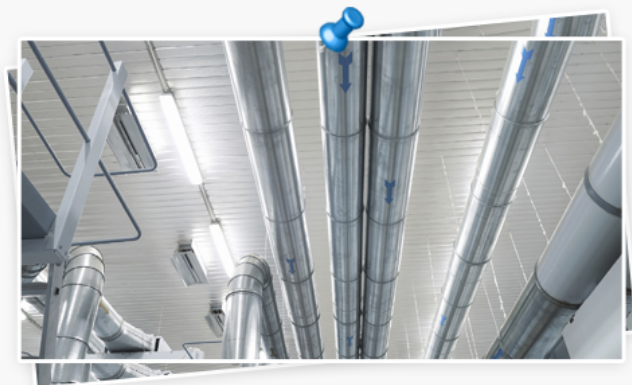
- ➔ Car parks ➔ Schools ➔ Hospitals
- ➔ Public buildings

Technical Specification

➔ Beam Angle	140°
➔ Colour Rendering (RA)	80
➔ CCT	4000K, 5000K, 6000K
➔ Operating Temperature	20°~45°
➔ IP Rating	IP65
➔ Certifications	CE & ROHS, 'ECA Compliant', LM-79, LM-80
➔ Driver	Internal
➔ Energy Rating	A
➔ LED Chip	Nichia/ Epistar

Replaces

- ➔ 1x25W replaces the Single Batten T8 58W
- ➔ 2X25W replaces the Double Batten T8 2x36
- ➔ 2X25W replaces the Double Batten T8 2x58W



sustainable growth

 **China Office**
 20A, Tower 3, Tianshan Rd 600
 Shanghai, 200051, China
 www.ecotecworld.com

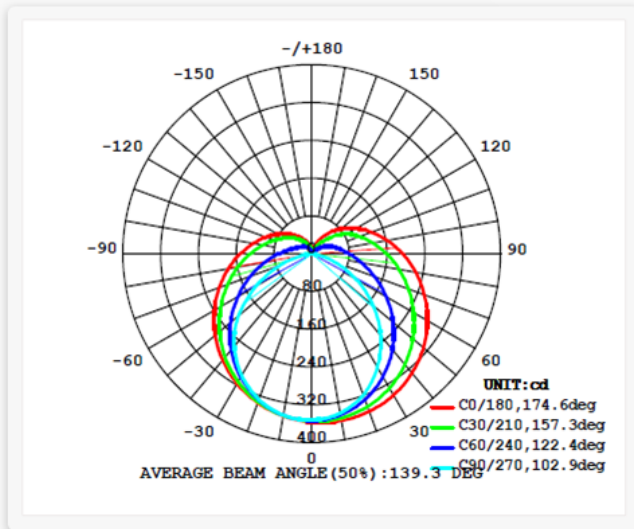
 **Germany Office**
 Kappenberghof 8,
 D-49843 Uelsen, Germany
 www.ecotecworld.com

 **HK office**
 Room 1203, Euro Trade
 Centre 13-14 Connaught
 Road, HK
 www.ecotecworld.com

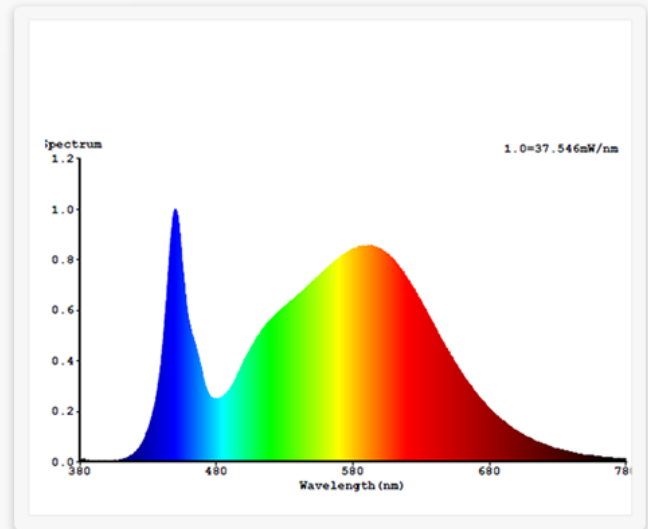
 **UK Office**
 30 St Giles Oxford
 OX13LE, UK
 www.ecotecworld.com



Light Distribution Curves 58W



Colour Rendering 58W



1200/1500mm/1800mm Single or Double

Model	ETW-BO-18W (1200mm Single)	ETW-BO-36W (1200mm Double)	ETW-BO-25W (1500mm Single)	ETW-BO-50W (1500mm Double)	ETW-BO-29W (1800mm Single)	ETW-BO-58W (1800mm Double)
Luminaire Rated Power Consumption	18W	2x 18W	25W	2x23W	29W	58W
Lumens	1530	3060	2125	4250	2465	4930
Luminous Efficiency lm/w	85	85	85	100	85	85
Dimensions	1200mm	1200mm	1500mm	1500mm	1800mm	1800mm
Voltage	220V	220V	220V	220V	220V	220V
Material	Aluminium	Aluminium	Aluminium	Aluminium	Aluminium	Aluminium